



BUSH AND TREE CROPS

Vehicle mounted sprayers for olives, nuts, vineyards, bush and tree crops

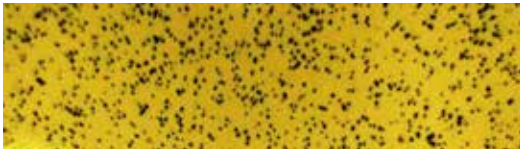


CONTROLLED DROPLET APPLICATION (CDA) TECHNOLOGY

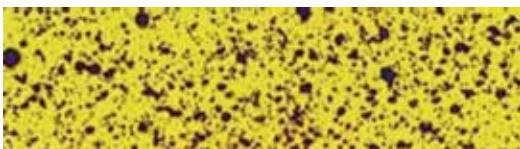
The effectiveness of an application depends on the uniformity of **droplet size and coverage (No./cm²)** to achieve the target. Micron's centrifugal disc sprayers with CDA technology allow excellent results in these parameters to offer the grower operational efficiencies, i.e. fewer reloads of spray liquid; reduced costs, labour, fuel and with less environmental impact.

CDA DROPLET VS HYDRAULIC PRESSURE NOZZLE COMPARISON

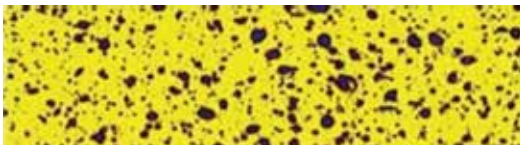
CDA (20L/ha)



HYDRAULIC (FINE DROPLET)



HYDRAULIC (MEDIUM DROPLET)

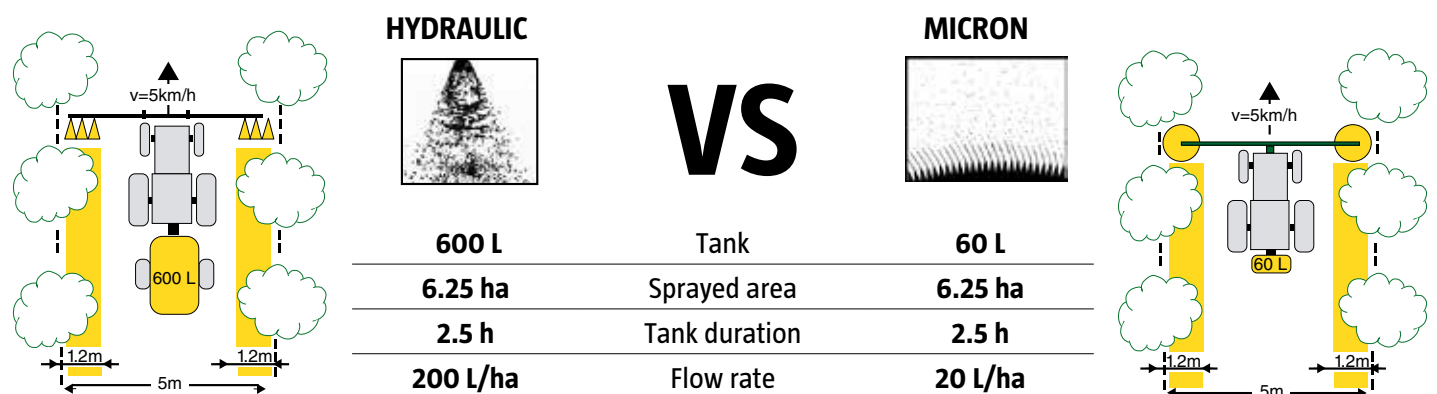


A conventional nozzle breaks up the spray liquid by pushing it under pressure through an orifice. This method of application is less efficient, as it produces a wide spectrum of droplet sizes.

This means that conventional nozzles must use much more liquid than they need to perform their function.

The efficiency of CDA allows low and ultra-low volumes of spray liquid to be used and productivity to be increased.

REAL CASE COMPARISON



OPERATIONAL EFFICIENCIES

- Lower spraying volume = **reduced costs**
- Homogeneous size and distribution = **better result**
- Reduced equipment weight = **less compaction**
- Shorter refill time = **faster spraying**

IMPROVED CHEMICAL EFFICIENCY

- **Improves target coverage and spray droplet retention**

SAFER SPRAYING

- **Reduced human error** due to fatigue
- **Reduced operator exposure** to product

LESS ENVIRONMENTAL IMPACT

- **95% reduction in drift**
- **Reduced water and product consumption**
- **Reduced soil contamination**

95% LESS DRIFT USING PROTECTIVE SHIELDS

Versatile sprayers for olive trees, vineyards, nuts, general bush and woody crops. Micron sprayers are ideal for treating weeds in situations where a complete chemical barrier is required. The shields completely protect the crop from drift, allowing work to be carried out in unfavourable wind conditions and/or young crops.

TECHNICAL SPECIFICATIONS-BAND SPRAYING EQUIPMENT

SHIELDS	FLOW RATES	AUTONOMY 60L	SPEED
Ø 40 cm	20-80 l/ha	3-10 ha	4-10 km/h
Ø 60 cm	20-80 l/ha	3-10 ha	4-10 km/h
Ø 90 cm	20-40 l/ha	6-12 ha	4-10 km/h
Ø 120 cm	20-40 l/ha	6-12 ha	4-10 km/h

**Hydraulic nozzle kit available as option.*

AVAILABLE METAL STRUCTURES



Structure with hydraulic piston, for 3-5m row widths



Structure with hydraulic piston, for 4-7m row widths



Structure with electric piston, for 3,6-6m row widths



Structure with manual extension, for 2,3-5m row widths

60L AND 300L TANKS AVAILABLE



**The tanks include a 12V electric pump to adapt to any vehicle.*



SPRAY-FLEX



Due to its flexible structure, the Spray-flex range has been developed specifically for vineyard, shrub and sapling treatments.

It has a brush head that rotates tightly around the base of the vine and trees to ensure maximum weed control. Due to its flexible structure, the sprayer is ideal for use on young plants. Also available with optional vinyl cover for added safety against drift.



S-flex 600 sprayer with manual structure, olives 4 x 1.5m



S-flex 400 sprayer with manual structure, vineyards 2.3 m



S-flex 400 sprayer with manual structure, vineyards 2,6 m



S-flex 600 sprayer with vinyl covers and manual structure, almonds 3,6 m

SPRAY-DOME



Spray-dome allows thorough weed control around trees, as well as along fences, paths, and buildings. In addition to providing a physical barrier to prevent drift, its protective shield has greater strength and less wear and tear, and therefore greater durability.



S-dome 900 sprayer with electrical structure, in pear and peach trees, 4 x 1.5m



S-dome 900 sprayer with electrical structure and 60L tank, almonds 6 x 6m



S-dome 1200 sprayer with hydraulic structure (5-7m) and 300L tank



S-dome 900 sprayer with electrical structure in young almond plantation 3.6 x 1.2m



SPRAY-DOME+

Spray-dome + units are designed for total area applications or for treating weeds between rows. Two models are available from 1.5 metres to 4.8 metres. Side hoods can also be added for inter-row treatments.



S-dome+ 3049 with S-dome 1200 shields (7.2m width treatment), walnut trees 12x12m

TECHNICAL SPECIFICATIONS-TOTAL AREA EQUIPMENT

CENTRE SHIELD		WORKING WIDTHS (cm) SD + SPRAYER				FLOW RATES	20-40 l/ha
MODEL	MIN-MAX (cm)	40 cm	60 cm	90 cm	120 cm	AUTONOMY (300L)	7-12ha
1524	150-240	230-320	270-360	330-420	390-480	SPEED	4-10 km/h
3049	300-480	380-560	420-600	480-660	520-720		

SPRAY-MISER

The S-miser features a triangular hood design to minimise the risk of drift. The width of the canopy treatment varies depending on the angle from 10 to 80 cm. Hoods can also be overlapped to reach 3.2m or added in some structures to the S-dome and S-flex hoods to reach 2m bands.



S-dome 1200 and S-miser with hydraulic structure, for 7m row width and 2m band width.



LANDROOTER is software connected to **MICRON** spraying equipment, offering the farmer **precision spraying**. The machine's electronics control and communicate key parameters in real time to ensure **ACCURATE AND CORRECT** application, instantly obtaining information for analysis.



- Locate or **create your plots** from Google maps.
- Define the **products** to be used.
- Define **working speeds**.
- Manage your staff and farm machinery.



The application has an assistant for **the preparation of broth**, which provides information on the mixture to be prepared, the flow rate per head, treated area, distance, application time...



During field work, **the software communicates with the sprayer and the farmer in real time**, monitoring the position, speed, and other operating parameters of the equipment. The farmer **can visualise the work during application and receive**

alerts to correct deviations. This ensures precision spraying for the farmer.

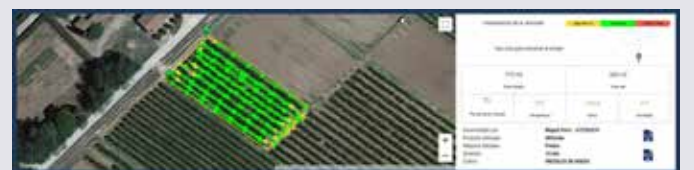
To improve usability, the software recognises when the user enters and leaves the plot, and by means of an **automatic START/STOP function** starts communicating with him. When leaving the field, the software sends all the information instantly to the **digital platform** to be analysed by the manager or technician.



Automatically receives information with **real data from the applications carried out**:

- Analyse and know precisely how the application went.
- Which areas have been treated.
- Speed of the applicator at any given moment.
- Machine status in real time.

Get all the information you need to optimise your work in the field.



FIELD CROPS

VARIDOME

Varidome range incorporates an inter-row solution that fully protects the crop from drift, improving weed control, reducing the use of selective products and reducing costs through precise spraying.



MICROMAX

Micromax is a three-speed rotary atomiser designed for herbicide, insecticide, and fungicide applications. By being able to select the right droplet size for each particular application, they significantly reduce spraying volumes and costs by minimising drift.



WEEDWIPER

WeedWiper weeding ensures that only the target weeds come into contact with the herbicide, as the product is transferred directly to the plant by contact, with no risk of drift and anti-drip technology.

