



# EARTHMOVING

ATTACHMENT CATALOGUE

1800 888 114

himac.com.au

# HOW TO GET IN TOUCH WITH **HIMAC ATTACHMENTS**

## TALK TO THE EXPERTS

The team at Himac are leading attachment specialists, ensuring you get the *right tool for the job*.

Our friendly staff will do whatever it takes to make your purchase as easy as possible.



**1800 888 114**



## GET A QUICK QUOTE ON THE GO

Visit our *easy to use* website for all product details, videos, interactive 3D models and more.

Being fully mobile / tablet compatible, you can request a quick quote when out and about.



**himac.com.au**



## LIKE HIMAC ON FACEBOOK

Check out Himac Attachments on Facebook for the latest product info straight to your News Feed.

Keep an eye out for *special pricing* as well as industry pics / videos for a bit of a laugh!



**himac attachments**





## // HARD WORK MADE EASY

Himac are one of Australia's leading specialists in attachments designed for earthmoving and agricultural machinery. This catalogue provides an overview of our diverse and ever-expanding Skid Steer attachment range.

At Himac, our large stockholding ensures fast despatch of attachments across Australia. We aim to give our customers prompt service and ongoing support while providing products that are reliable and value-oriented.

## // WHY HIMAC?



HIGH QUALITY, DURABLE ATTACHMENTS THAT PERFORM



PROMPT TURNAROUND TIME WITH EXTENSIVE STOCK AND AVAILABILITY



REPUTABLE, LOCAL AUSTRALIAN MANUFACTURING



FULL RANGE OF ATTACHMENTS FOR ALL EARTHMOVING AND AGRICULTURAL MACHINERY



COMPETITIVE PRICING WITH EXCEPTIONAL VALUE



RIGHT ADVICE, PERSONAL SERVICE AND SUPPORT

### Attachments to suit

**GEHL**



**MUSTANG**



**CAT**



**Bobcat**



**VOLVO**



**TAKEUCHI**



# WHAT OUR CUSTOMERS SAY



“ We were looking for a Rake Bucket that could *stand the demands* of a Track Machine. The Himaac **Rake Sieve Bucket** with high tensile flat bar tyres was a perfect find!

MAL - BAIL SAND & GRAVEL, ALBANY WA ”



“ We used the Himaac **Extreme Duty Slasher** on a very steep bank in one of our horse paddocks at home. It took *just 20 minutes* to mow something that would normally take us a whole day to mow and whipper snip!

ALISON - BRISBANE SCREENING, CASHMERE QLD ”



“ The Himaac **Stump Bucket** is a truly powerful tool, I've removed some of the *biggest stumps* I've seen with no signs of damage to the attachment... unique and awesome!

DEAN NORTON BOBCAT, ALBANY WA ”



“ I had to clear a load of lantana with my PT-100 and wanted to do it as quickly as possible. I used the Himaac **Push Rake** which worked *very efficiently* to get the job done. I was able to push down good sized trees and handle rocks on the ground, while its sifting ability meant I only removed what was necessary.

GEOFF KUBLER - GYMPIE QLD ”



“ We have purchased 10 attachments from Himaac over the last two years which include a **Ripper, Slasher, Brooms, Chain Trencher, Brush Grapple, Forks, Auger with Mixer Bowl** and **Stick Rake** - each of these giving *great value for money!* Himaac back up all their products and are a good company to deal with.

GLEN - SHIRE OF BROOMEHILL-TAMBELLUP WA ”

Buckets	 <b>GP BUCKET</b> » PAGE 6	 <b>4 IN 1 BUCKET</b> » PAGE 6	 <b>RAKE BUCKET</b> » PAGE 7
Grapples	 <b>BRUSH GRAPPLE</b> » PAGE 8	 <b>DEMOLITION GRAPPLE</b> » PAGE 8	 <b>SINGULAR GRAPPLE</b> » PAGE 8
Forks	 <b>PALLET FORKS</b> » PAGE 9	 <b>HAY FORKS</b> » PAGE 9	 <b>GRAPPLE FORKS</b> » PAGE 9
Augers & Trenchers	 <b>AUGER DRIVES / MOUNTS</b> » PAGE 10	 <b>ROCK / TUNGSTEN AUGERS</b> » PAGE 10	 <b>CHAIN TRENCHER</b> » PAGE 10
Ground Engaging	 <b>RIPPER</b> » PAGE 11	 <b>DOZER BLADE</b> » PAGE 11	 <b>ROCK BREAKER</b> » PAGE 11
Concrete Equipment	 <b>MIXER BUCKET</b> » PAGE 12	 <b>UNLOADING BUCKET</b> » PAGE 12	 <b>CONCRETE KIBBLE</b> » PAGE 12
Cleaning Equipment	 <b>BUCKET BROOM</b> » PAGE 13	 <b>ANGLE BROOM</b> » PAGE 13	 <b>BELT SCRAPER</b> » PAGE 13
Vegetation Control	 <b>PUSH RAKE</b> » PAGE 14	 <b>STUMP REMOVAL BUCKET</b> » PAGE 14	 <b>MULCHER</b> » PAGE 14
Slashers	 <b>HEAVY DUTY SLASHER</b> » PAGE 15	 <b>EXTREME DUTY SLASHER</b> » PAGE 15	 <b>ROTARY AXE 7000</b> » PAGE 15
Misc	 <b>LIFTING BOOM &amp; GRAB</b> » PAGE 16	 <b>LOADING RAMPS</b> » PAGE 16	 <b>MOUNTS / ADAPTORS</b> » PAGE 16

# BUCKETS

## GP BUCKET

TRACKED MACHINES



ADDITIONAL REINFORCING



FEATURES

- » 6 mm high grade plate shell
- » 150 x 20 mm cutting edge and side cutters
- » Safety steps fitted
- » Plate work bracing on back for more strength
- » Wear plates - 12 mm base, 10 mm sides
- » Optional bolt-on edge / teeth available



— WIDTH RANGE —  
**1575 - 2133**  
millimetres

## GP BUCKET

WHEELED MACHINES



— WIDTH RANGE —  
**1245 - 2030**  
millimetres

FEATURES

- » 6 mm high grade plate shell
- » 150 x 20 mm cutting edge and side cutters
- » Wear plates - 12 mm base, 10 mm sides
- » Safety steps fitted
- » Longer base for better visibility
- » Optional bolt-on edge / teeth available



## 4 IN 1 BUCKET

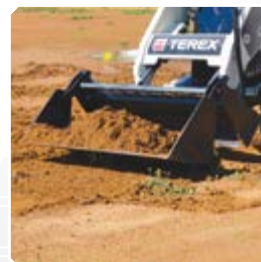
FLAT FLOOR



— WIDTH RANGE —  
**1575 - 2035**  
millimetres

FEATURES

- » Flat floor design for easier unloading
- » Gussets from base to sides
- » Built-in spill guard
- » Grab teeth on overlap for better grip
- » 20 mm high tensile base - Bissalloy
- » Greasable pivot points





## RAKE BUCKET | FLAT BAR

Optional  
Extreme  
Duty



### FEATURES

- » Flat bar design allows maximum sifting
- » Front lip to hold rocks, branches... etc
- » Reinforced front cutting edge
- » Greater back blading performance
- » AR36 high grade flat bar - 70 mm spacings
- » Safety steps fitted

UNIVERSAL  
MOUNT  
— OTHERS MOUNTS AVAILABLE —

— WIDTH RANGE —  
**1320 - 2200**  
millimetres

360°  
VIEW

Take a CLOSER look

[himac.com.au/rb](http://himac.com.au/rb)



Optional  
Extreme  
Duty

## RAKE BUCKET | ROUND BAR

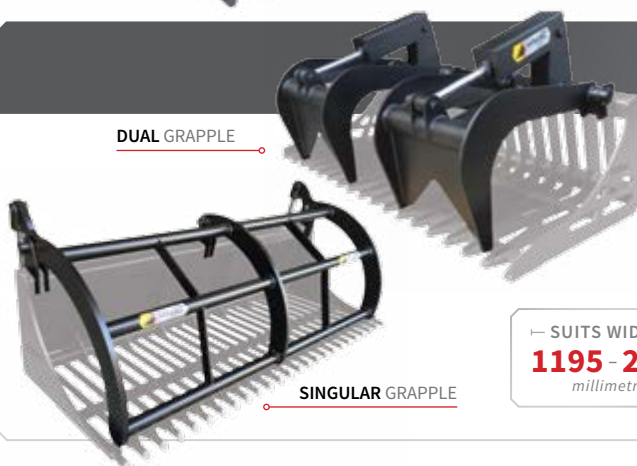
### FEATURES

- » Closed or open back options
- » Round bars for demolition / scrap clean up
- » 30 mm 4140 high tensile bar
- » Reinforcing spacers (2 row upgrade available)
- » 50 mm spacings, 12 mm scalloped sides
- » Safety steps fitted

— WIDTH RANGE —  
**1195 - 2185**  
millimetres



DUAL GRAPPLE



SINGULAR GRAPPLE

## GRAPPLE KITS | DUAL / SINGLE

### FEATURES

- » Suits Flat and Round Bar Rake Buckets
- » Twin cylinder or Single piece grapples options
- » Can be fitted to all sizes or as supply only
- » Includes hoses, fittings and couplings
- » Single remote operation

— SUITS WIDTHS —  
**1195 - 2200**  
millimetres



# GRAPPLES

## BRUSH ROOT GRAPPLE



Optional  
Extreme  
Duty



### FEATURES

- » Tynes angled at front edge allow larger volume to be collected, while reaching over debris piles, without disturbing the ground
- » Greasable pivot points
- » Dual independent grapples, cylinder covers
- » Includes hoses and couplings

UNIVERSAL  
MOUNT  
— OTHERS MOUNTS AVAILABLE —

— WIDTH RANGE —  
**1675 - 2135**  
millimetres

**360°**  
VIEW

Take a CLOSER look

[himac.com.au/bg](http://himac.com.au/bg)

## DEMOLITION GRAPPLE

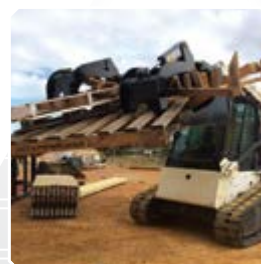


Optional  
Extreme  
Duty

### FEATURES

- » Dual independent grapples, cylinder covers
- » Greasable pivot points
- » 150 x 20 mm cutting edge (bolt-on available)
- » Includes hoses and couplings
- » Single remote operation
- » Reinforced base

— WIDTH RANGE —  
**1675 - 1980**  
millimetres



## SINGULAR GRAPPLE

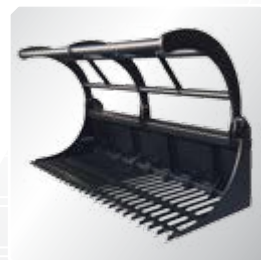


Extreme  
Duty  
Design

### FEATURES

- » Extreme duty design with incredible grappling strength
- » 25 mm thick grapple arms and 50 NB horizontal bars
- » Designed to suit Rake Buckets
- » Greasable pivot points
- » Includes hoses and couplings
- » Single remote operation

— SUITS WIDTHS —  
**1195 - 2200**  
millimetres





## PALLET FORKS

SLIDING TYNE



CERTIFIED  
TO COMPLY WITH  
**AS2359**



OPTIONAL HYDRAULIC SIDE SHIFT

### FEATURES

- » Tested and certified to comply with AS2359
- » Heavy duty load guard
- » Easy hook up adjustable latch locked tynes - fixed at top and bottom to prevent bouncing
- » Optional hydraulic side shift
- » Floating tynie models also available

UNIVERSAL  
MOUNT  
— OTHERS MOUNTS AVAILABLE —

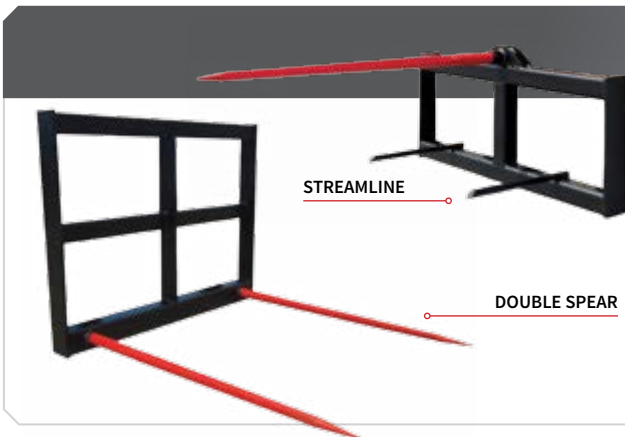
— CAPACITIES —  
**1500 - 2500**  
kilograms

**360°**  
VIEW

Take a CLOSER look

[himac.com.au/pf](http://himac.com.au/pf)

## HAY FORKS

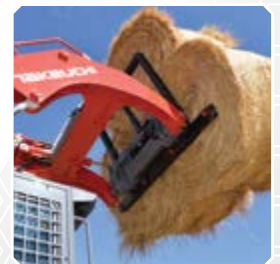


STREAMLINE

DOUBLE SPEAR

### FEATURES

- » Affordable hay handling
- » Removable hay spears
- » 1200 mm Conus 2 spears
- » High quality German-made spears
- » Available in 4 spear, 2 spear and Streamline
- » Stabiliser bars to support bale (Streamline)



## GRAPPLE FORKS



### FEATURES

- » Easy hook up adjustable latch locked tynes
- » Hydraulic grapple for hard to handle loads
- » 1800 kg and 2500 kg capacities
- » Includes hoses and couplings
- » Use as standard forks with grapple open



# GROUND ENGAGING

## AUGER DRIVES / AUGERS



### LIFETIME WARRANTY

Parts replacement against shaft dislodgement and any failure of the Shock Lock teeth system



### FEATURES

- » Unique non-dislodgement shaft with **lifetime warranty** - 65 mm Round or 75 mm Square
- » Includes 2.2 m hoses and couplings
- » Warranties - 6 year gearbox, 3 year motor
- » Rock and Tungsten Augers available

— FLOW RANGE —

**27 - 150**  
litres per min

— AUGER WIDTHS —

**100 - 1200**  
millimetres

### DOUBLE PIN EXCAVATOR HITCH



SKID STEER MOUNT WITH ANTI-SWING CRADLE HITCH

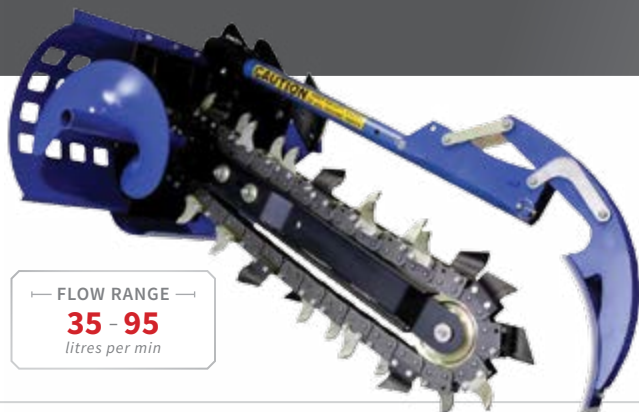
## DRIVE MOUNTS / HITCHES

### RANGE

- » Universal Skid Steer mount
- » ASV RC30 / PT30 mount
- » Toyota mount - horizontal pins
- » Euro hitch frame
- » Universal Mini Loader mount
- » Double pin Excavator hitch (25 mm - 45 mm)
- » Telehandler mounting frames



## CHAIN TRENCHER



— FLOW RANGE —

**35 - 95**  
litres per min

### FEATURES

- » Planetary drive
- » Includes discharge auger and scraper / crumber bar
- » Manual side shift frames
- » Adjustable depth control skid
- » Dig depths up to 1200 mm
- » 6 year gearbox warranty
- » 3 year motor warranty



# GROUND ENGAGING

## RIPPER / SCARIFIER



Extreme  
Duty  
Design



### FEATURES

- » Ideal for earth preparation and fire breaks
- » Forward and reverse operation
- » Replaceable teeth
- » Extreme duty design
- » Digging depth up to 300 mm
- » Available as 3, 5 and 7 tyne models

UNIVERSAL  
MOUNT  
— OTHERS MOUNTS AVAILABLE —

— DIG DEPTH —  
**300**  
millimetres

360°  
VIEW |

Take a CLOSER look

[himac.com.au/rs](http://himac.com.au/rs)

## ANGLE DOZER BLADE



— WIDTH RANGE —  
**2100 - 2400**  
millimetres

### FEATURES

- » High quality bolted blade in Hardox HB 400
- » Hydraulic angling  $\pm 30^\circ$
- » Shockproof valve
- » Includes hoses, couplings and bolt-on edge
- » Angle only and Angle & Tilt models available



## ROCK BREAKER



— FLOW RANGE —  
**14 - 150**  
litres per min

### FEATURES

- » Lower maintenance means lower running cost
- » Bolt-less design for reduced vibration
- » Guaranteed lower sound levels
- » Trouble free and reduced wear
- » Includes hoses (exc couplings)
- » Mini Loader and Excavator models also available



# CONCRETE EQUIPMENT

## SELF-LOADING MIXER



### FEATURES

- » Self-loading, hydraulic opening at bottom
- » Unloading pipe included
- » Safety grill with bag breaker
- » Electric control kit supplied
- » Includes hoses and couplings
- » Extra strong spiral design paddles

UNIVERSAL  
MOUNT  
— OTHERS MOUNTS AVAILABLE —

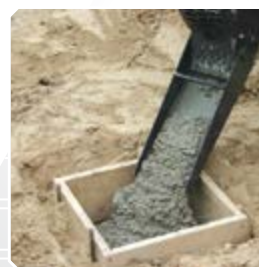
LOAD CAPACITIES →  
**200 - 600**  
litres

## UNLOADING BUCKET



### FEATURES

- » Heavy duty construction
- » Hydraulic door for operation from cab
- » 0.45 m<sup>3</sup> capacity
- » Includes extended discharge chute for easy concrete pour and placement
- » Includes hoses and couplings



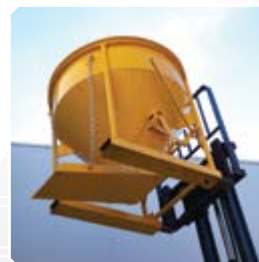
## CONCRETE KIBBLE



### FEATURES

- » Designed for overhead lifting and fork lifting (pockets fitted)
- » Bottom and side discharge
- » Discharge lever both sides
- » Supplied with full instructions, risk and hazard identification manual
- » Ideal with Himac Pallet Fork attachments

CAPACITIES  
**0.5 - 1.0**  
cubic metres



# CLEANING EQUIPMENT

## BUCKET BROOM



### FEATURES

- » Collects material while sweeping
- » Single piece PPN brush for longer life
- » Replaceable bolt-on cutting edge ( reversible )
- » Includes hydraulic hoses and couplings
- » Fast and easy brush height adjustment
- » Motor protected within case

### UNIVERSAL MOUNT

— OTHERS MOUNTS AVAILABLE —

— WIDTH RANGE —  
**1550 - 2100**  
millimetres

## ANGLE BROOM



— WIDTH RANGE —  
**2100 - 2400**  
millimetres

### FEATURES

- » Hydraulic engine with direct transmission
- » Hydraulic hoses with quick couplers
- » Single piece PPN brush for longer life
- » Optional hydraulic angle kit (+ / - 30°)
- » Robust build quality



## CONVEYOR SCRAPER



— LENGTH RANGE —  
**2000 - 2400**  
millimetres

### FEATURES

- » For effective under conveyor belt cleaning
- » Quick to attach and easy to operate
- » Replaceable bolt-on edge fitted
- » Custom widths and length available any size
- » Affordable cleaning solution designed for Skid Steers



# VEGETATION CONTROL

## PUSH STICK RAKE



Optional  
Extreme  
Duty



### FEATURES

- » Robust construction with side wings
- » Ideal for clearing vegetation, fence lines... etc
- » 155 mm spacing between tynes
- » Heavy duty - 100 x 20 mm high grade tynes
- » Extreme duty - 100 x 25 mm high grade tynes
- » Rear tyne stabilisers and curved front

UNIVERSAL  
MOUNT  
— OTHERS MOUNTS AVAILABLE —

— WIDTH RANGE —  
**1800 - 3000**  
millimetres

**360°** |   
VIEW

Take a CLOSER look

[himac.com.au/pr](http://himac.com.au/pr)

## STUMP REMOVAL BUCKET



Extreme  
Duty  
Design

**360°** |   
VIEW  
[himac.com.au/sb](http://himac.com.au/sb)

### FEATURES

- » 300 mm wide tip with Excavator-style cast teeth
- » 13 mm high tensile curved base
- » Remove stumps in a matter of minutes
- » Dig footings and trenches up to 920 mm ( 36" )
- » For demolition, pull up asphalt / concrete and more



## MULCHER

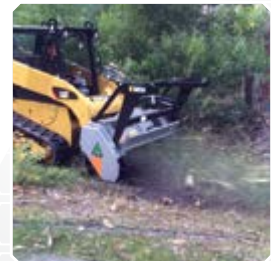


Extreme  
Duty  
Design

— FLOW RANGE —  
**60 - 150**  
litres per min

### FEATURES

- » Industry leading mulchers
- » Equipped with working pressure gauge ( UML/SSL )
- » Includes hoses and couplings
- » PMM/SSL fitted with self levelling mount
- » Pushing frame ( UML/SSL )
- » Excavator models also available



# VEGETATION CONTROL



## SLASHER HEAVY DUTY



### FEATURES

- » Up to 3" diameter cutting capacity
- » Cutting widths up to 1830 mm
- » Reinforced slasher deck with fork pockets
- » Heavy duty twin blade carrier
- » Run down clutch protection
- » Safety chains fitted, worksafe approved

**UNIVERSAL MOUNT**  
— OTHERS MOUNTS AVAILABLE —

— FLOW RANGE —  
**40 - 120**  
litres per min

**360° VIEW** |

Take a CLOSER look

[himalac.com.au/hs](http://himalac.com.au/hs)



**Extreme Duty Design**

## SLASHER EXTREME DUTY

### FEATURES

- » 5" diameter cutting capacity
- » High torque hydraulic motor (direct drive)
- » 7 mm deck thickness
- » Direct drive through massive hub assembly
- » Double edged blades
- » No case drain required, wire protection

— FLOW RANGE —  
**60 - 140**  
litres per min



**Extreme Duty Design**

## ROTARY AXE 7000

### FEATURES

- » 8" diameter cutting capacity
- » High torque hydraulic motor (direct drive)
- » Hinging front hood to allow more volume
- » Double edged blades - dual rotation
- » Heavy duty push bar
- » Carbide teeth fitted to rotor

— FLOW RANGE —  
**80 - 145**  
litres per min



# MISCELLANEOUS

## LIFTING BOOM & GRAB



CERTIFIED  
TO COMPLY WITH  
**AS1418**



### FEATURES

- » 1000 kg or 1500 kg lifting capacities
- » Designed for maximum visibility
- » Tested and certified to comply with AS1418
- » Compliance plate fitted
- » Works with Block Grab and Swivel Hook
- » Mini Loader model also available

**UNIVERSAL MOUNT**  
— OTHERS MOUNTS AVAILABLE —

— CAPACITIES —  
**1000 - 1500**  
kilograms

## ALUMINIUM RAMPS



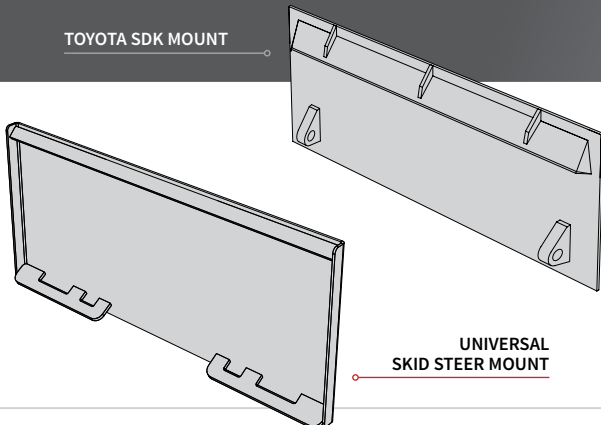
— CAPACITIES —  
**1500 - 11500**  
kilograms

### FEATURES

- » Tested and certified for easy loading and unloading of machinery when transporting
- » Includes securing pins to give you extra peace of mind
- » Models to suit pneumatic tyres, steel tracks, rubber pads and rubber tracks
- » Widths from 400 mm - 660 mm



TOYOTA SDK MOUNT

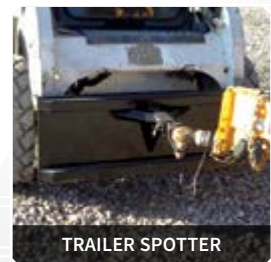


UNIVERSAL SKID STEER MOUNT

## MOUNTS / ADAPTORS

### RANGE

- » Universal Skid Steer mount
- » Toyota SDK 8, 9, 10 and 11
- » ASV / Positrak PT30 and RC30
- » Bobcat, Gehl and Mustang
- » Universal Mini Loader mount
- » Tractor pin / non-standard to Universal adaptor mount
- » Trailer spotter ( tow ball )



TRAILER SPOTTER





# 360° VIEW

DISCOVER 360° VIEW

[HIMAC.COM.AU/360](http://HIMAC.COM.AU/360)

## ROTATE, ZOOM + PAN

**360° VIEW** is an interactive web feature from Himac that allows you to view our attachments right up close and from any angle.



## TOUCHSCREEN COMPATIBLE

We have made **360° VIEW** fully compatible with smartphones and tablets - that way you can use it wherever you are!



## NEW MODELS ADDED

By continuously adding new **360° VIEW** models to our website, you can look forward to seeing more attachments in detail.



# AGRICULTURE



## TO SUIT TELEHANDLERS + AG LOADERS

Did you know we also specialise in agricultural attachments? Visit [himac.com.au](http://himac.com.au) to view our range.



» RAKE BUCKETS



» AUGER DRIVES



» PUSH RAKES



» FORKS

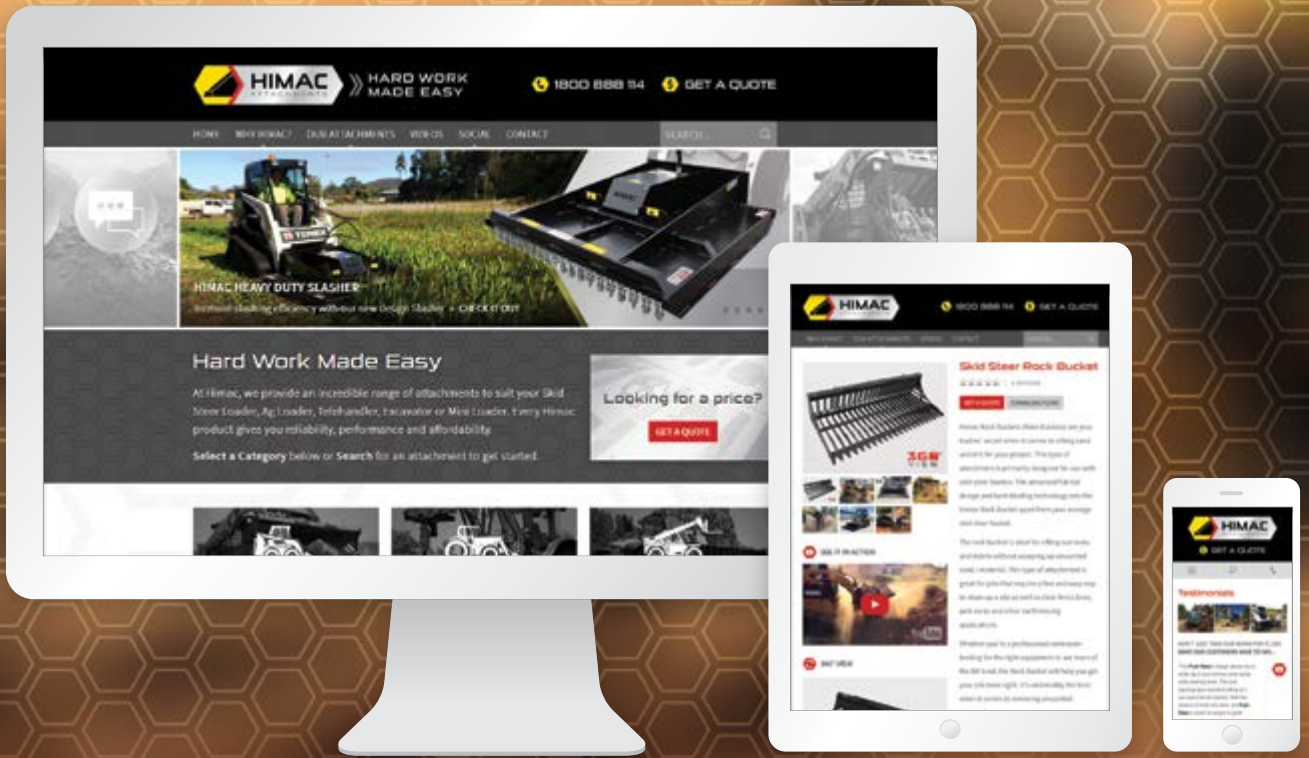


» MIXER BUCKETS



» GRAPPLES

MUCH MORE  
+



REQUEST A QUOTE ONLINE

HIMAC.COM.AU

## STEP 1 BROWSE OUR WIDE RANGE

Begin by visiting [himac.com.au](http://himac.com.au) and choose the category of attachments to suit your machine (eg. Skid Steer, Ag Loader... etc)



## STEP 2 CHOOSE WHAT YOU WANT

On any of our product pages, simply select **GET A QUOTE** and submit your request, or continue to add more to your quote.



## STEP 3 YOUR QUOTE IS PREPARED

Within 8 working hours, one of our friendly attachment experts will attend to your quote request with competitive pricing.





ATTACHMENTS THAT ARE  
SIMPLY GROUNDBREAKING



☎ 1800 888 114

📍 [himac.com.au](http://himac.com.au)

📘 [himacattachments](https://www.facebook.com/himacattachments)